



# AUCTION

To Be Sold  
by Photograph

at

**RALSTON  
TIMBER  
PRODUCTS**

182 Holly Street  
Ralston, Pennsylvania

**PALLET EQUIPMENT  
LOCATED AT:**

**NATURE  
STONE & WOOD  
PRODUCTS**

Wyalusing, Pennsylvania

**Saturday,  
April 29**

**SALE MANAGER:  
BRIAN D.  
TRAGESER**



**716.741.9171**

Fax: 716.741.9656

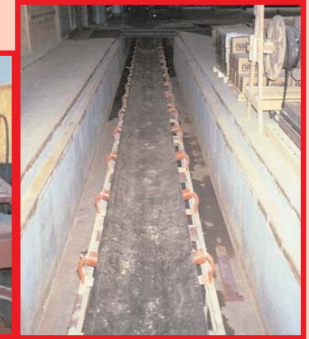
8385 Black Walnut Dr.  
East Amherst, NY

*The equipment was in operation for approximately one year.*

*All equipment is in excellent or next to new condition.*

## MILL EQUIPMENT

- Rebuilt FULGHUM 60" Chip Pack, s/n F1-F1L-1245 with 150 hp motor, 7 x 7 screen, loading system cyclone (never used)
- 2002 PCS 24 Sawdust Collection System with 8' cyclone, 48" dust blower, 40 hp motor, rotary air lock, piping
- 2002 Edem 20' Vibrating Conveyor with saw dust screen, MDI metal detector, (metal detector was never used - still in the box)
- 2002 CORNELL Belt Conveyor 30" x 100' with 5 hp drive
- 2002 CORNELL Belt Conveyor 14" x 20'
- Rebuilt in 2002 VIKING Duomatic Nailing Machine, 4-stringer, 48" x 60" pallet capacity, with stacker, AutoPallet PLC controls
- 2002 ALLEN BRADLEY Motor Control Center, 3200 amp main with 1-150 HP and 4-100 hp SMC plus soft start modular panel box with 39-starters & disconnects 2 hp to 60 hp
- 2002 CORNELL Lumber Transfer Deck, 3-strand, 10 x 20', roof top, electric drive
- 2002 CORNELL 612 Top and Bottom Thin Kerf Gang Resaw with infeed and outfeed, pressure rolls, variable speed drive, 2-100 hp drive motors, with blades and spacers, cant sizer
- KNOX 20 hp Air Compresso with dryer system
- HYSTER 3000 lb Fork Truck, LP gas
- Rebuilt CORNELL 200B Rip Saw with infeed, 20 hp electric drive



## AUCTIONEER'S NOTE:

Please contact us at 716.741.9171 to make arrangements to view this eqpt before April 29th. This eqpt will be offered by photograph at the auction for Ralston Timber Products.

## REMOVAL:

All items must be removed within one week.

**TERMS:** Bidding on this eqpt can be done by attending the auction of Ralston Timber Products, by telephone or by placing a Proxy Bid. All Proxy Bids must be accompanied w/a 20% deposit in guaranteed funds no later than April 28 at Noon. Sold "as is" "where is".. 13% Buyer's Premium in effect (less 3% w/cash, cashier's check, company check (w/a letter of guarantee) or via wire transfer).