



To Be Sold by PHOTOGRAPH

At Steele Lumber Co.
125 Newtown Rd.
Riddlesburg, PA

Equipment Located
Mays Landing,
New Jersey
(Northwest of Atlantic City, NJ)

Saturday, May 21st

*Specialty Saw
Mill and Wood Shop
constructed for
community use. All
equipment has been
completely rebuilt with
less than 1000 hours
operating time!! All
equipment is in
excellent condition and
very well maintained.*

**SALE MANAGER:
BRIAN D.
TRAGESER**

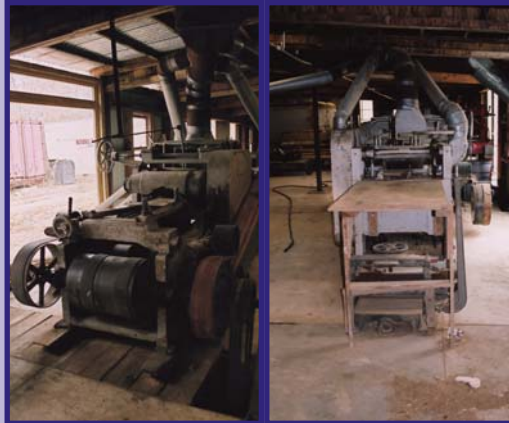


716.741.9171

Fax: 716.741.9656

8385 Black Walnut Dr.
East Amherst, NY

EQUIPMENT ■ MELLOTT Live Deck 10' x 20', 3-strand, stop and load, hydraulic drive (excellent condition) ■ MELLOTT No. 5 Hydraulic Log Turner ■ Completely Rebuilt FRICK 01-3 Head Block 1180C Manual Mill, 16' carriage, hand set, power reseeder, 50' steel track and husk (excellent condition) ■ FRICK 2-Saw Edger 27" w/infeed and outfeed rollcases and line shaft drive ■ CUMMINS Power Unit, diesel with line shaft drive, Rockford clutch ■ Rebuilt HERMANCE Mdl 60 4-Sided Molder, line shaft drive, variable speed feed ■ SINKER DAVIS Mdl 4-46 20" Gang Resaw., 4-blades, power infeed ■ FRICK Mdl 357 Shingle Shake Saw w/extra blade ■ NEWMAN Mdl 500 5-Head Planer/Matcher, 8" x 16", 1-profile head, line shaft drive (excellent condition) ■ MCDONOUGH Mdl 44 Center Split Resaw, tilt and bevel feed, line shaft drive (excellent condition) ■ Large 48" Dust Blower, with line shaft drive, dust pipe (very good condition) ■ POWERMATIC Mdl 180 24" Finish Planer, variable speed drive, grinding attachment (excellent condition) ■ INDUSTRIAL Mdl 212R Defect Saw, infeed conveyor, 5 hp motor, foot control (new condition) ■ NYLE Mdl L50 Dehumidification Kiln Unit, 9'x12' modular structure ■ CORNELL No. 24 Dust Blower, line shaft drive w/piping ■ Double Sided Shaper for tenoning, air hold downs, hydraulic feed, drive ■ 2002 ECONOLINE 7-Ton Equipment Trailer, tilting, twin axle, pinto hook-up ■ ALSO to be offered Line Shaft System with 2-way gear boxes, all stands and supports (runs under the floor)



AUCTIONEER'S NOTE: Please contact us at 716.741.9171 to make arrangements to view this eqpt before May 19th . This eqpt will be offered by photograph at the auction for Steele Lbr.

TERMS: Bidding on this eqpt can be done by attending the auction of Steele Lbr, by telephone or by placing a Proxy Bid. All Proxy Bids must be accompanied w/a 20% deposit in guaranteed funds - balance within 24 hrs. Full settlement must be made day of sale. All machinery and eqpt is sold "as is" "where is".

INSPECTION: Contact Joe Eonato at 609.517.4158 (cell) or 609.625.5653 to schedule an appointment to view this eqpt. Contact Sale Manager, Brian Trageser, with any questions that you may have at 716.741.9171.

REMOVAL INFO: All items must be removed by May 28th.

